

how to make a paint pad



Alma Stoller



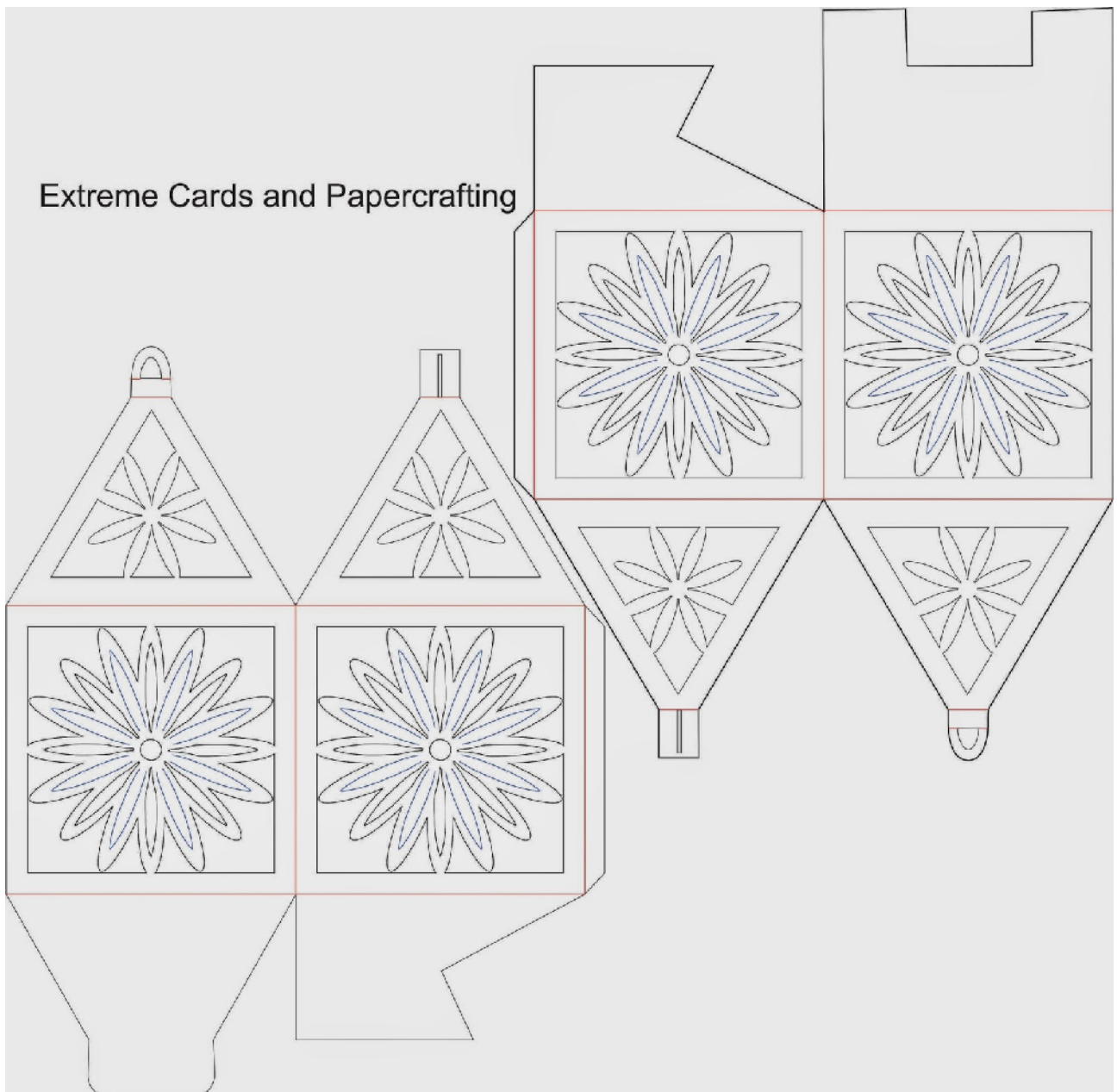




<http://extremecards.blogspot.com>



Extreme Cards and Papercrafting





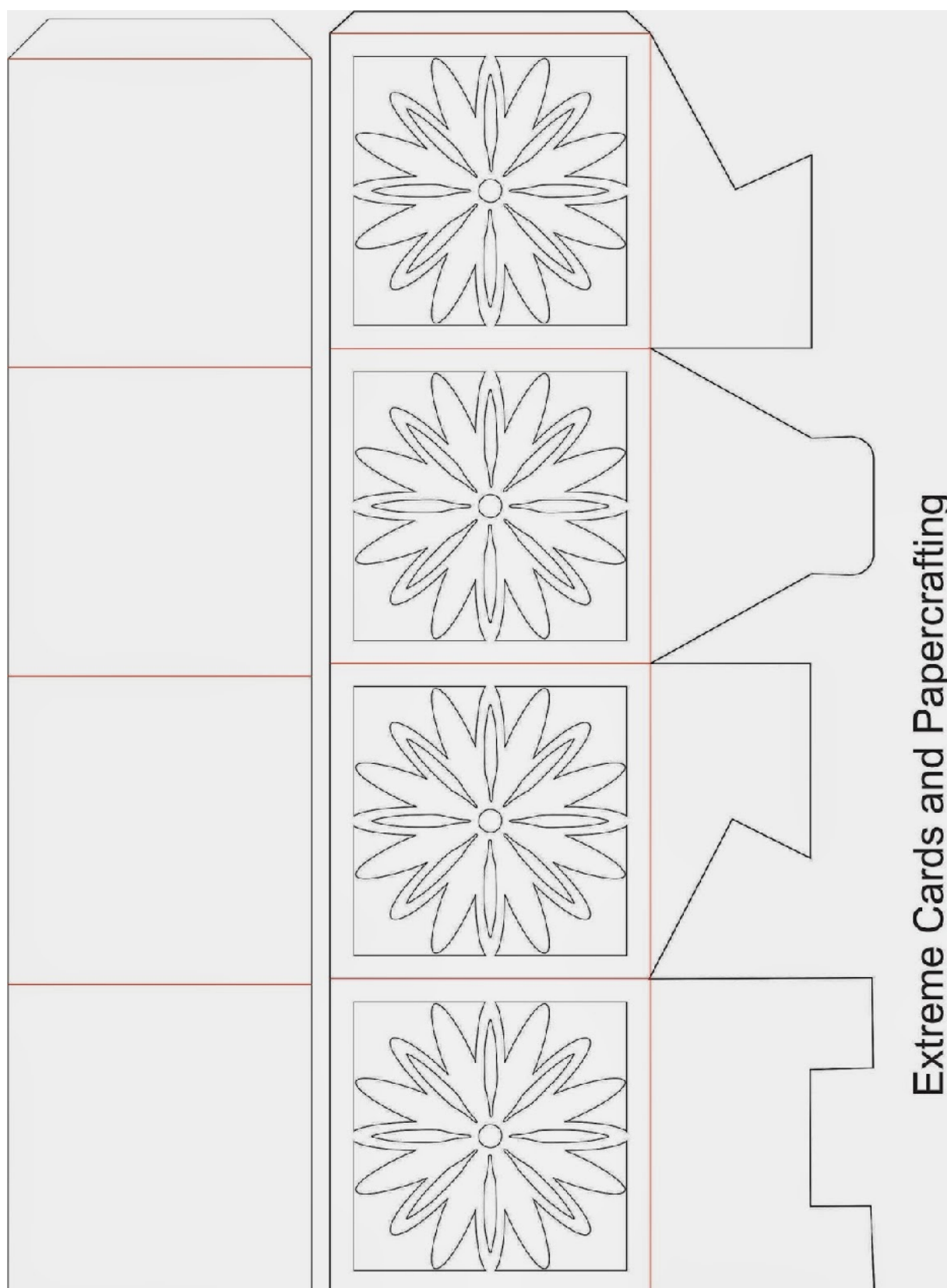


<http://extremecards.blogspot.com>









Extreme Cards and Papercrafting



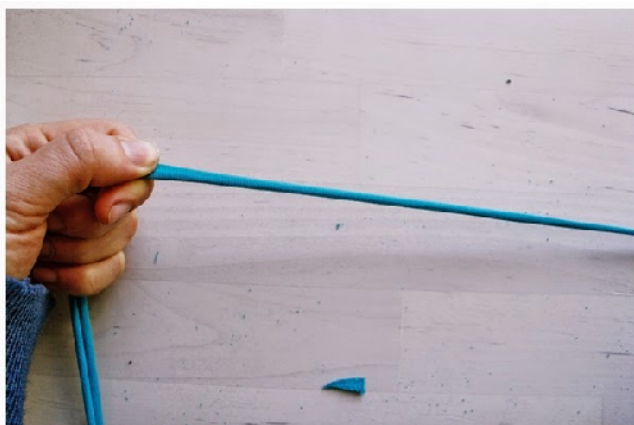
Photography courtesy of the
Philadelphia International Airport



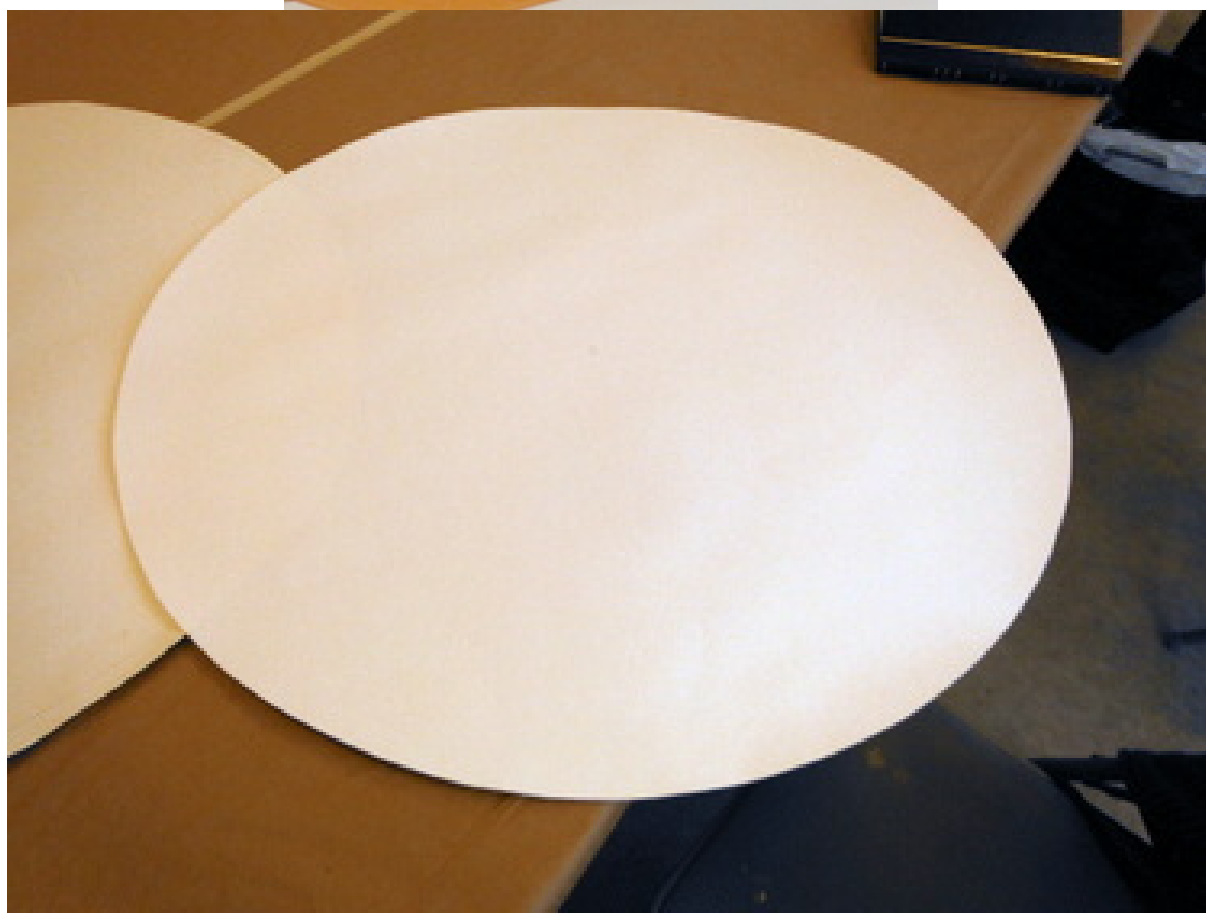


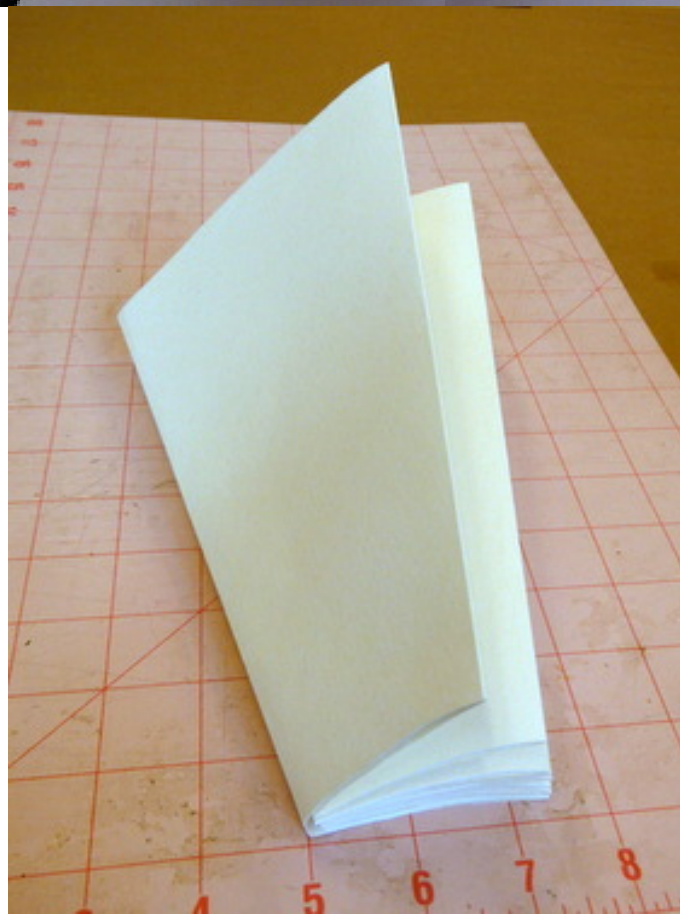




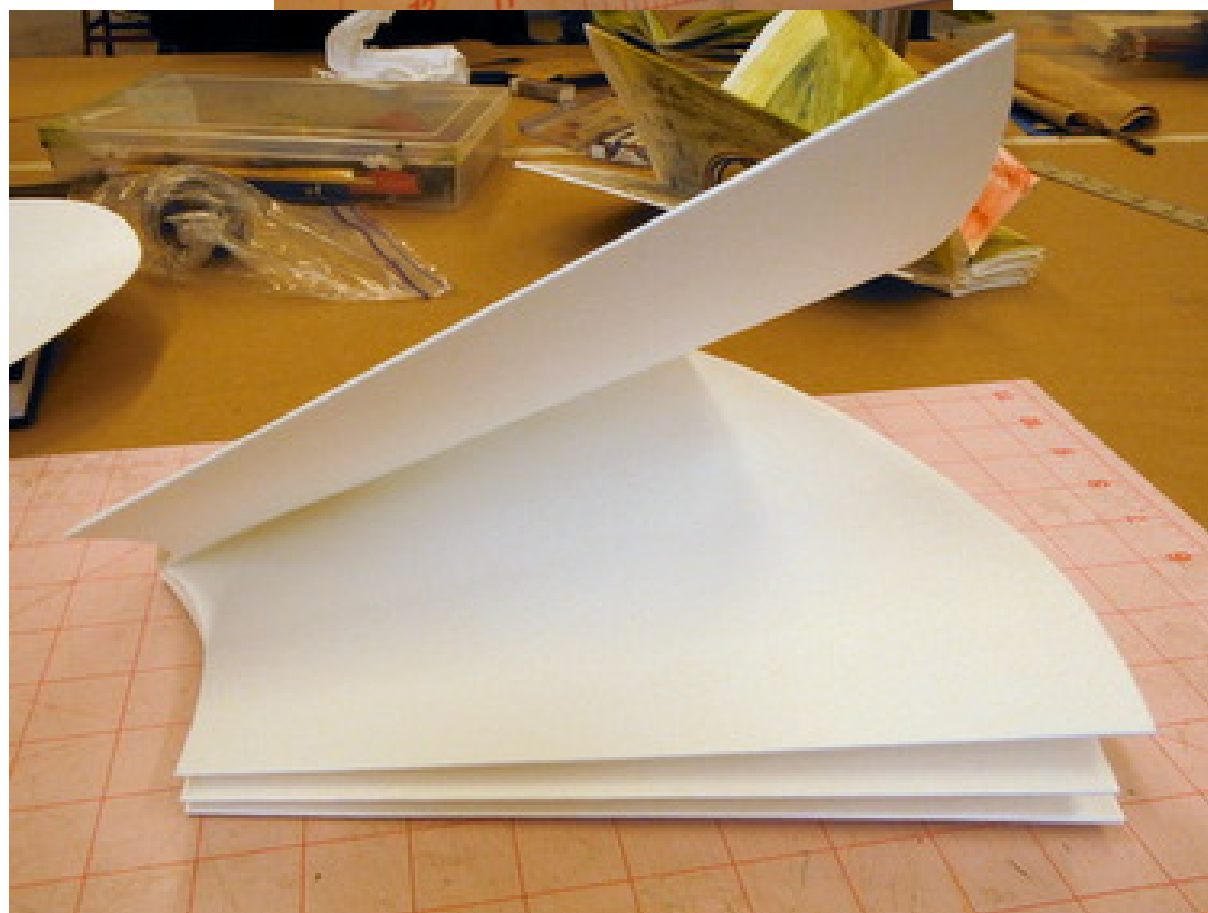


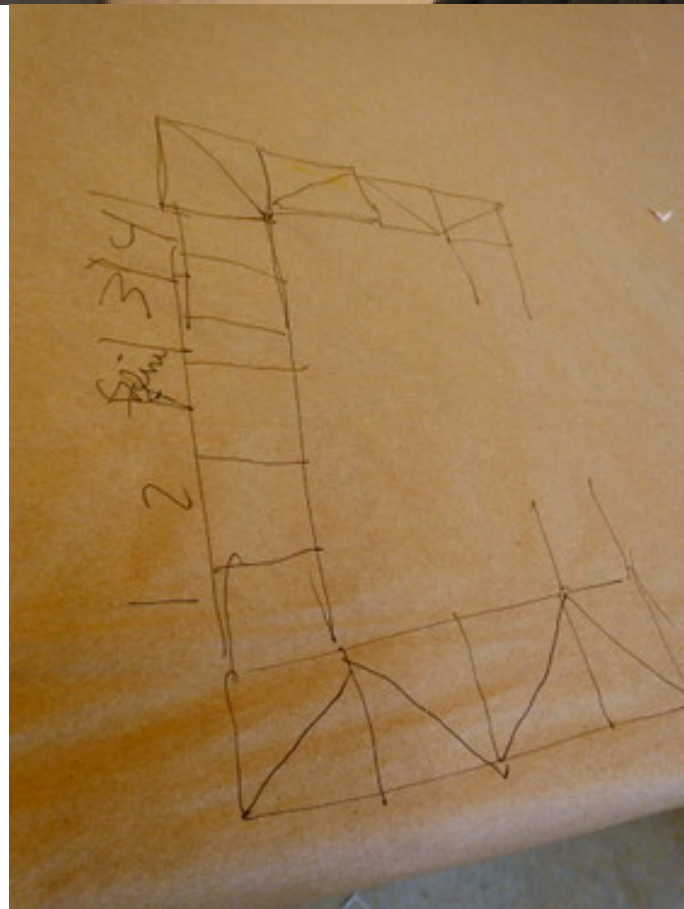
Ken Leslie's Designing Toroidal Books

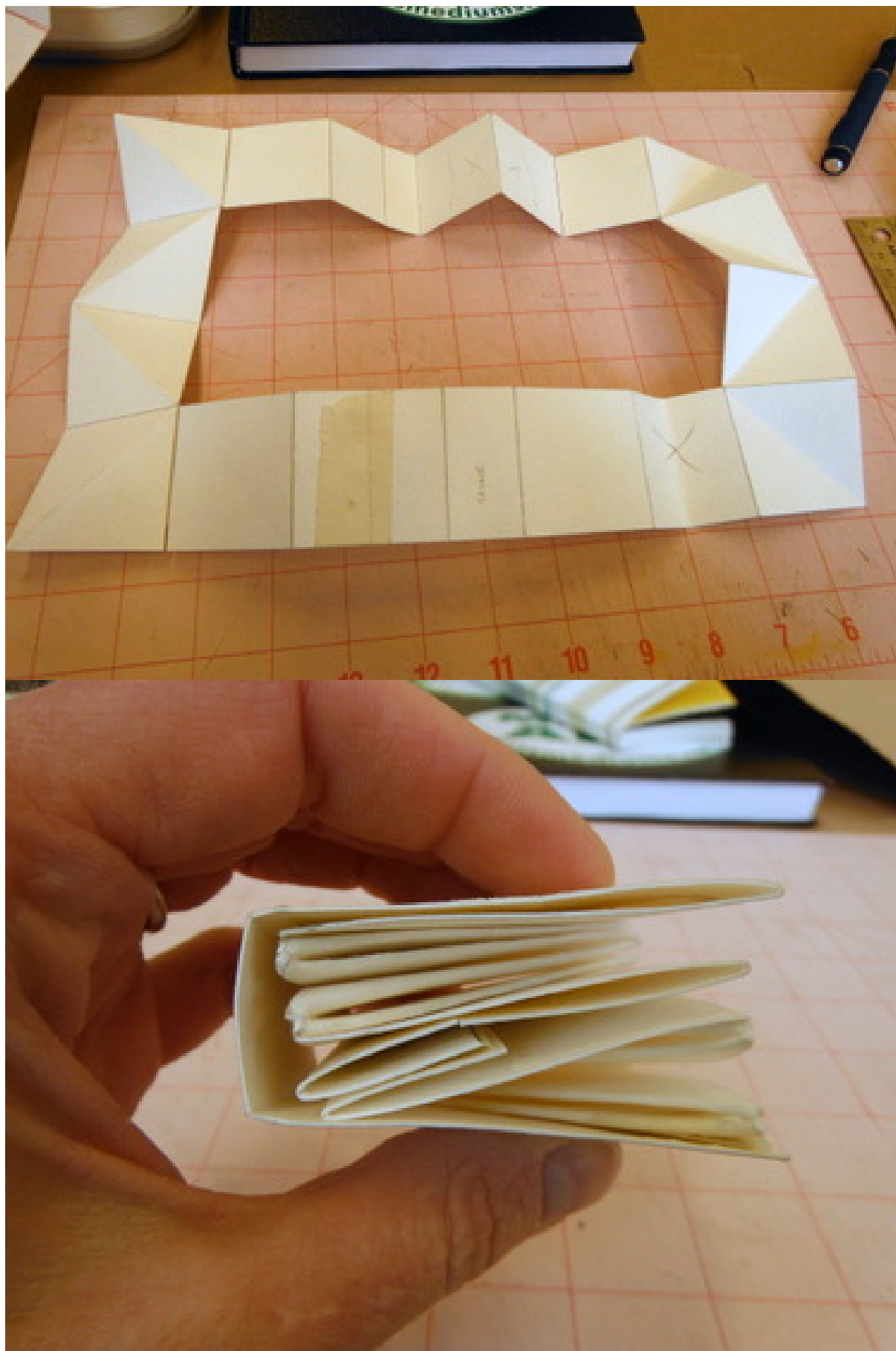


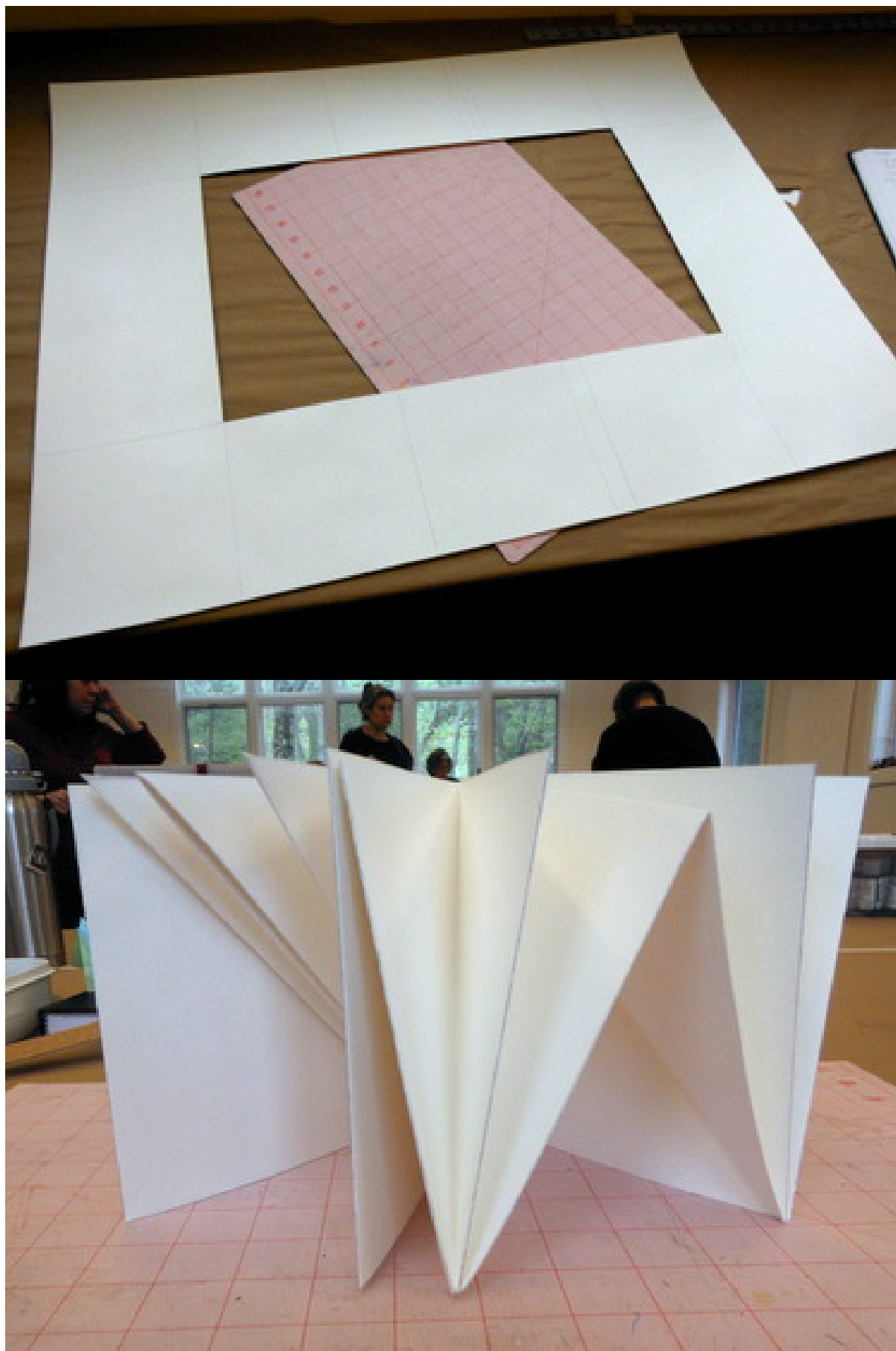


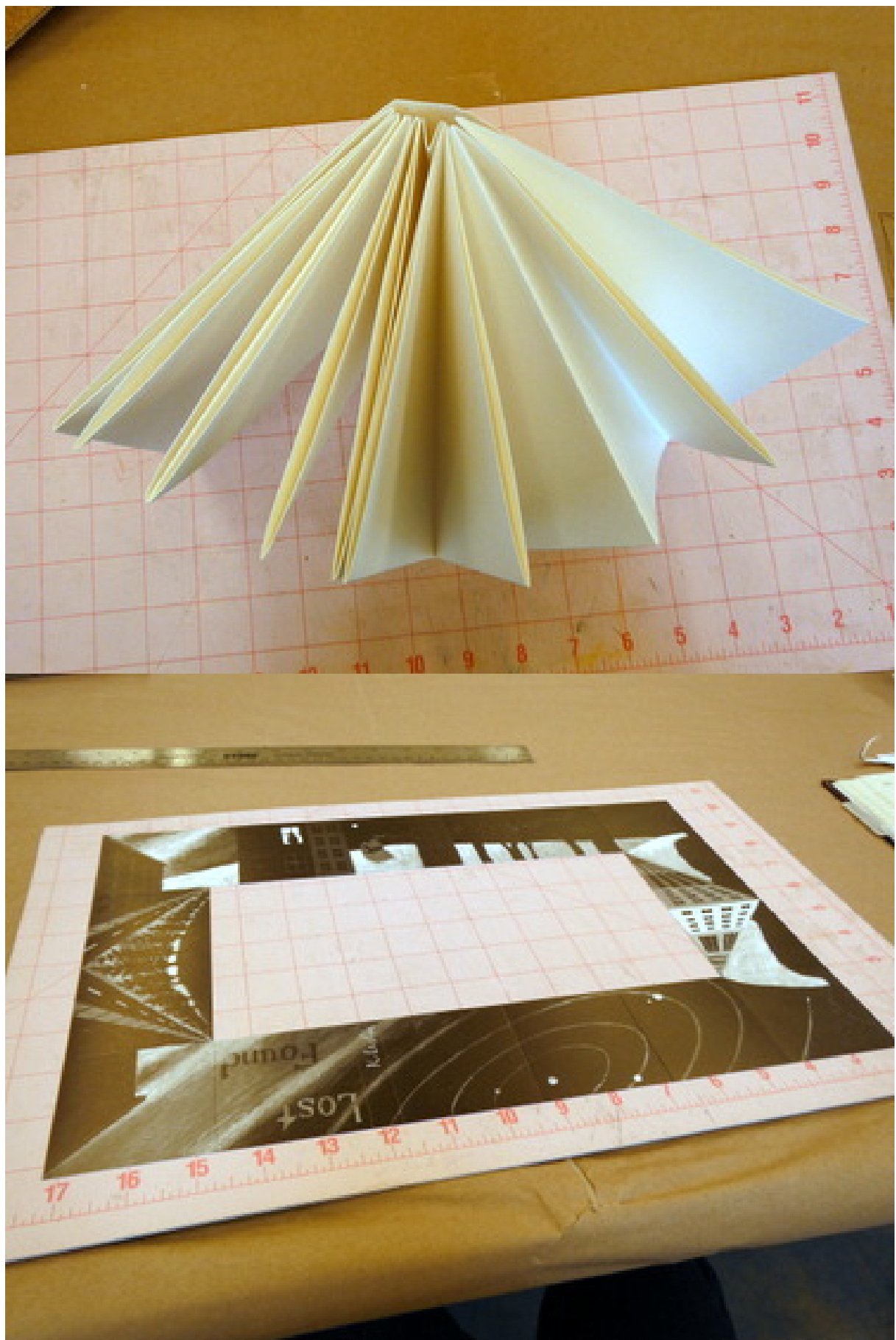


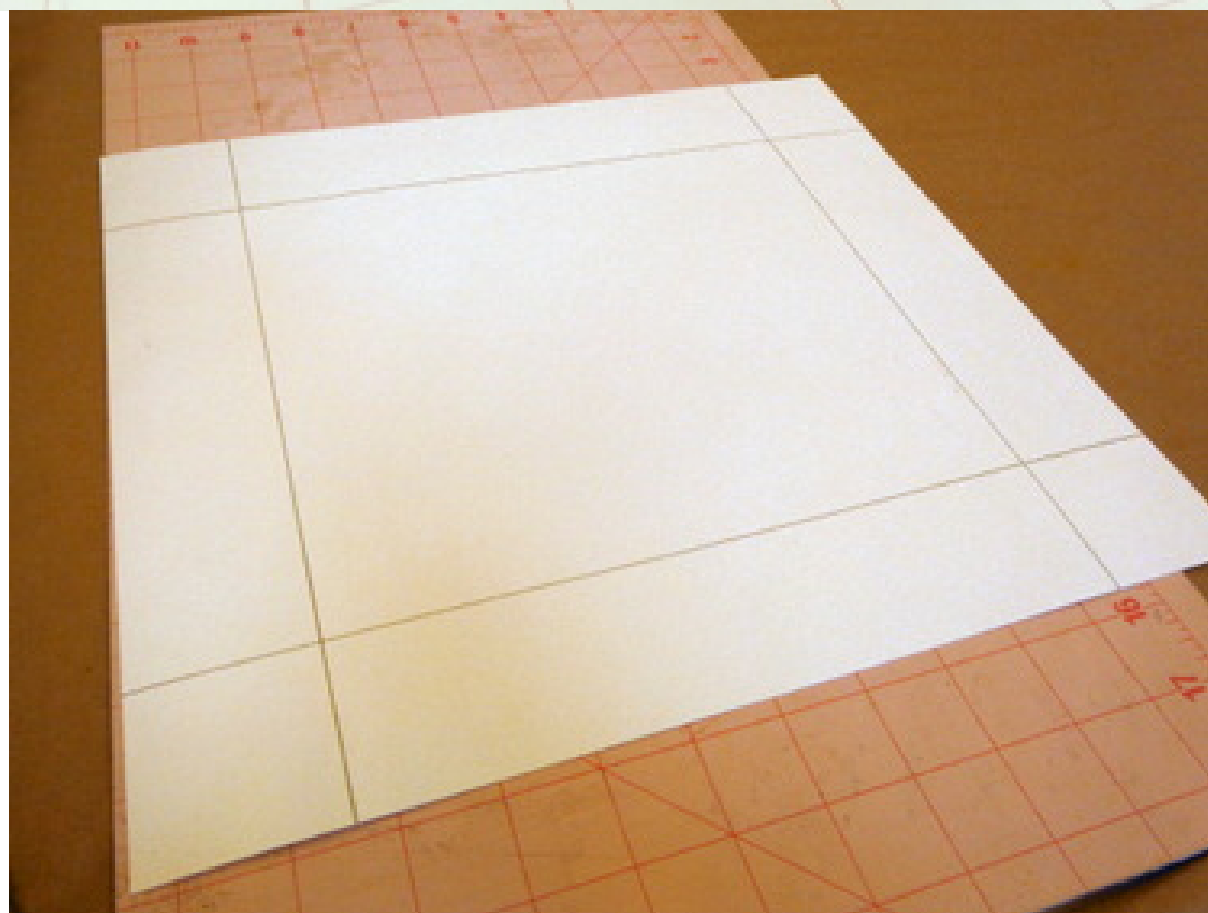


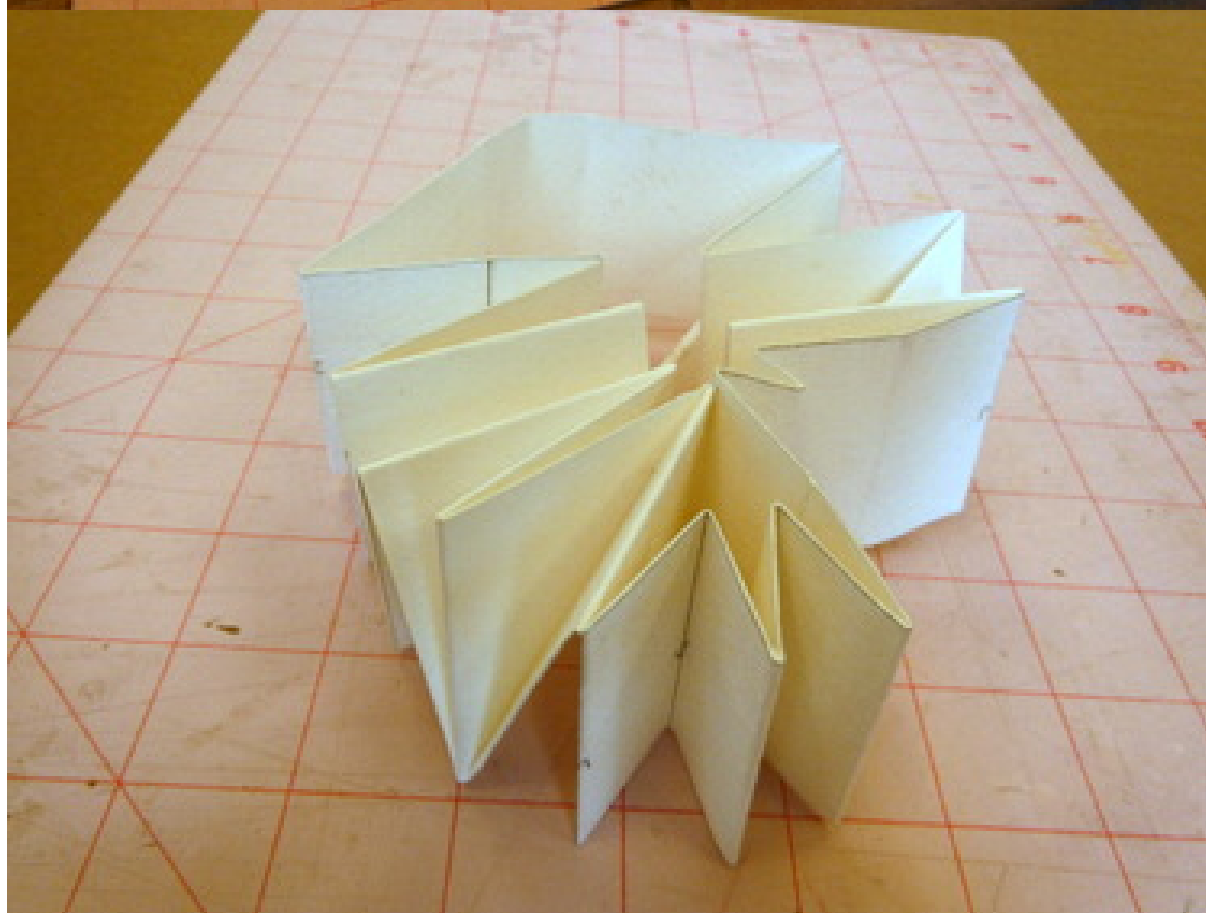
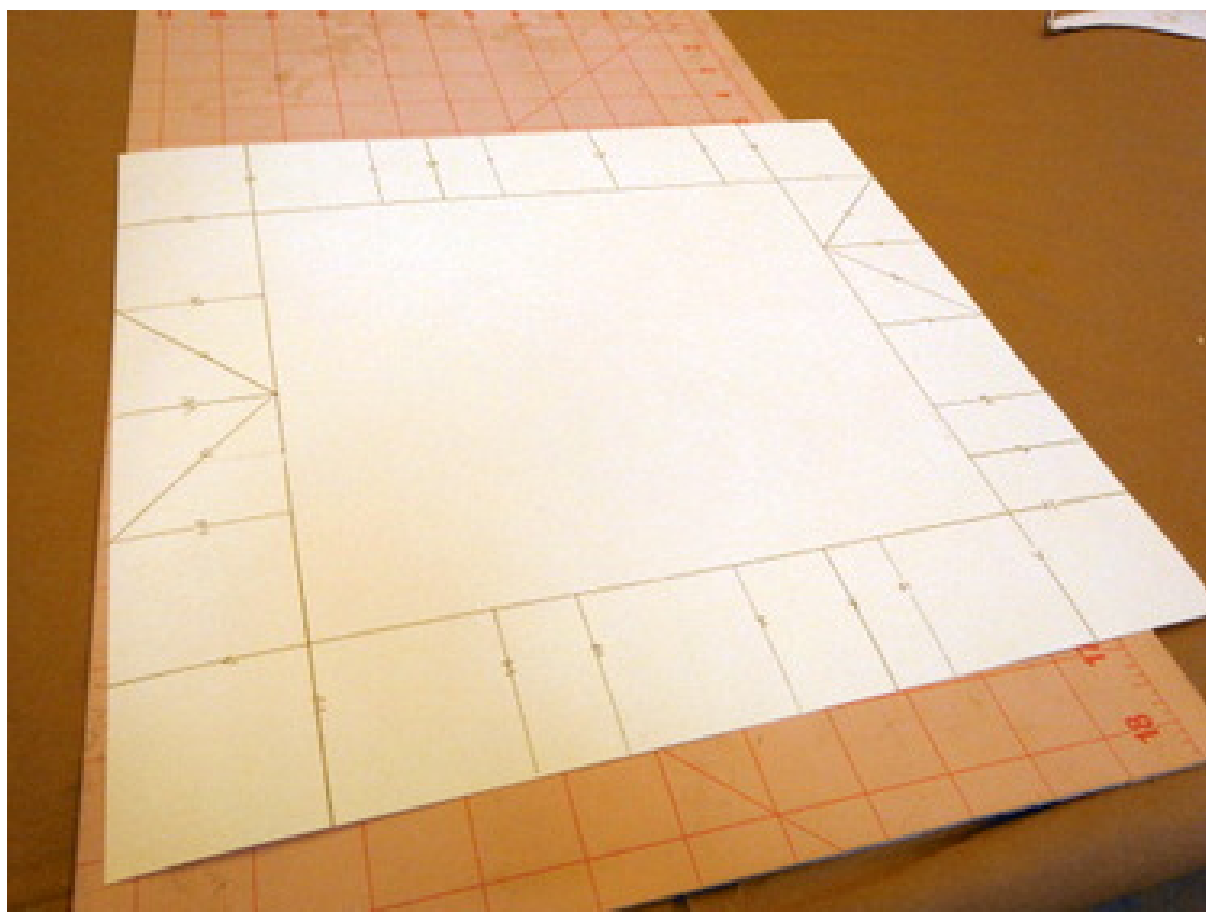






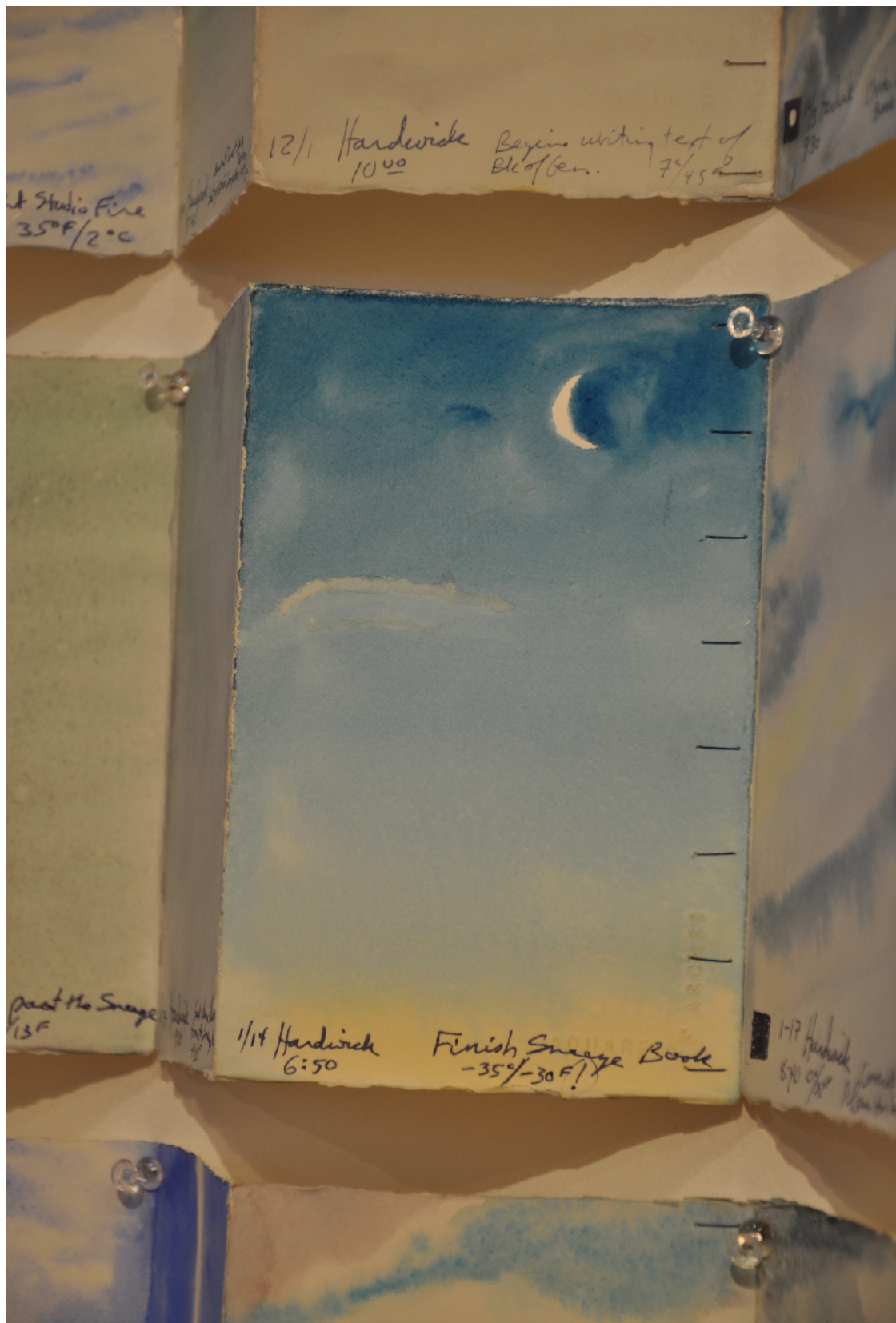




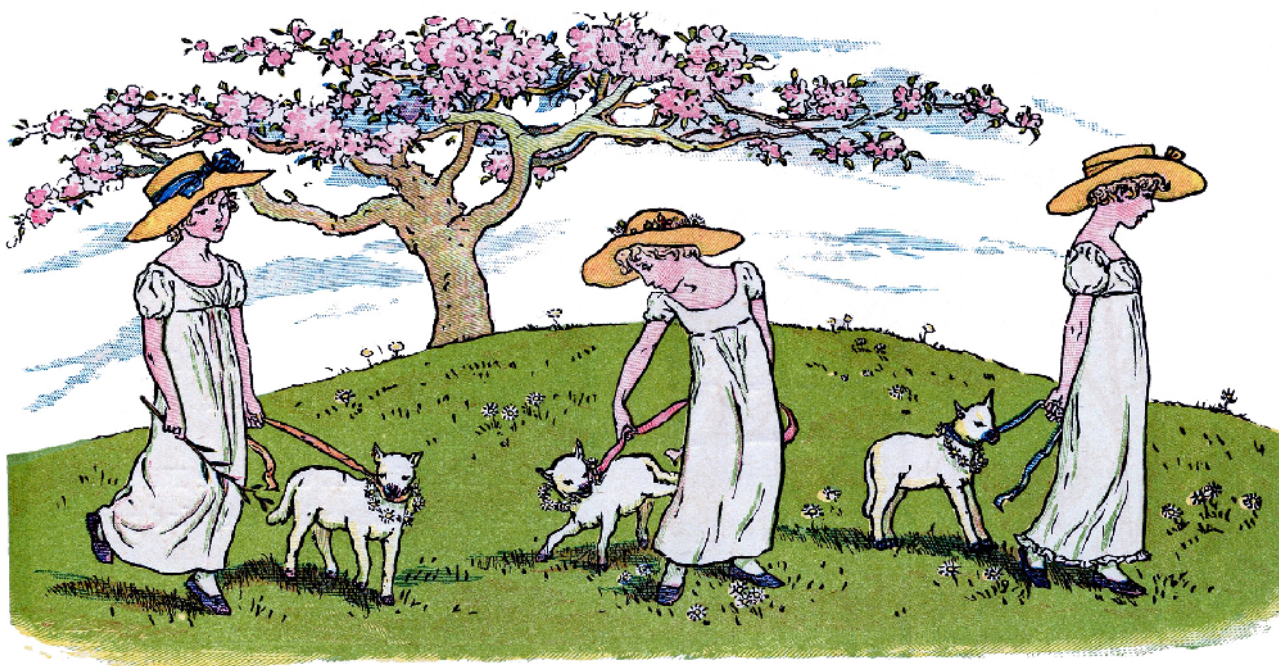


Ken Leslie sky journal









biscotti doppio cioccolato





Ingredients

2 cups semisweet chocolate

3/4 cup plus 2 tablespoons of America's Test Kitchen GF flour blend or 3/4 cup of King Arthur GF blend

1/4 cup unsweetened cocoa powder

1/2 teaspoon baking soda

1/2 teaspoon salt

1/4 teaspoon xanthan gum

3/4 cup packed light brown sugar

1/4 cup granulated sugar

2 large eggs

5 tablespoons melted coconut oil

2 tablespoons melted and cooled butter

1 teaspoon vanilla

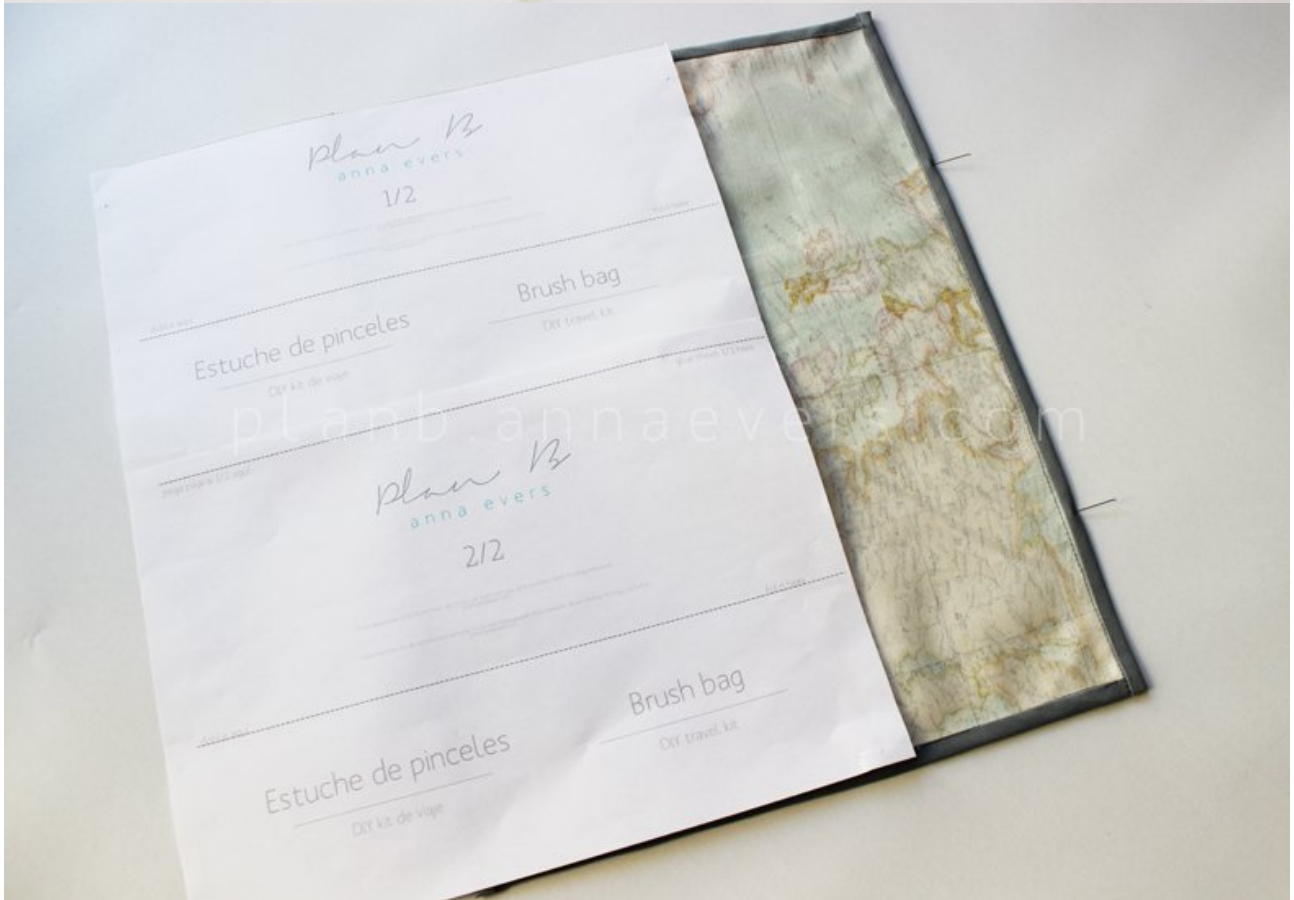
1/2 teaspoon of instant espresso or 1 teaspoon of instant coffee

1 cup bittersweet chocolate (chips or chopped)

1. Melt semisweet chocolate in double boiler and let cool slightly.
2. In separate bowl, whisk together flour blend, cocoa, baking soda and salt and set aside.
3. Blend sugars, eggs, oil, butter, vanilla and espresso/coffee until creamy then mix in cooled chocolate. Fold in flour mixture with spatula until soft dough forms. Mix in bittersweet chocolate pieces. Cover bowl and let rest for 30 minutes. (This step is very important as it helps gritty rice flour absorb fat).
4. Preheat oven to 350 degrees. Line baking sheet with parchment paper and scoop 2 tablespoons of dough onto sheet for each cookie about 2 inches apart. Bake for 12-14 minutes, rotating baking sheet half way through.
5. Remove from oven and let cool on rack for 5 minutes. Cookies are best eaten within 2 days and are best kept in airtight container at room temp.











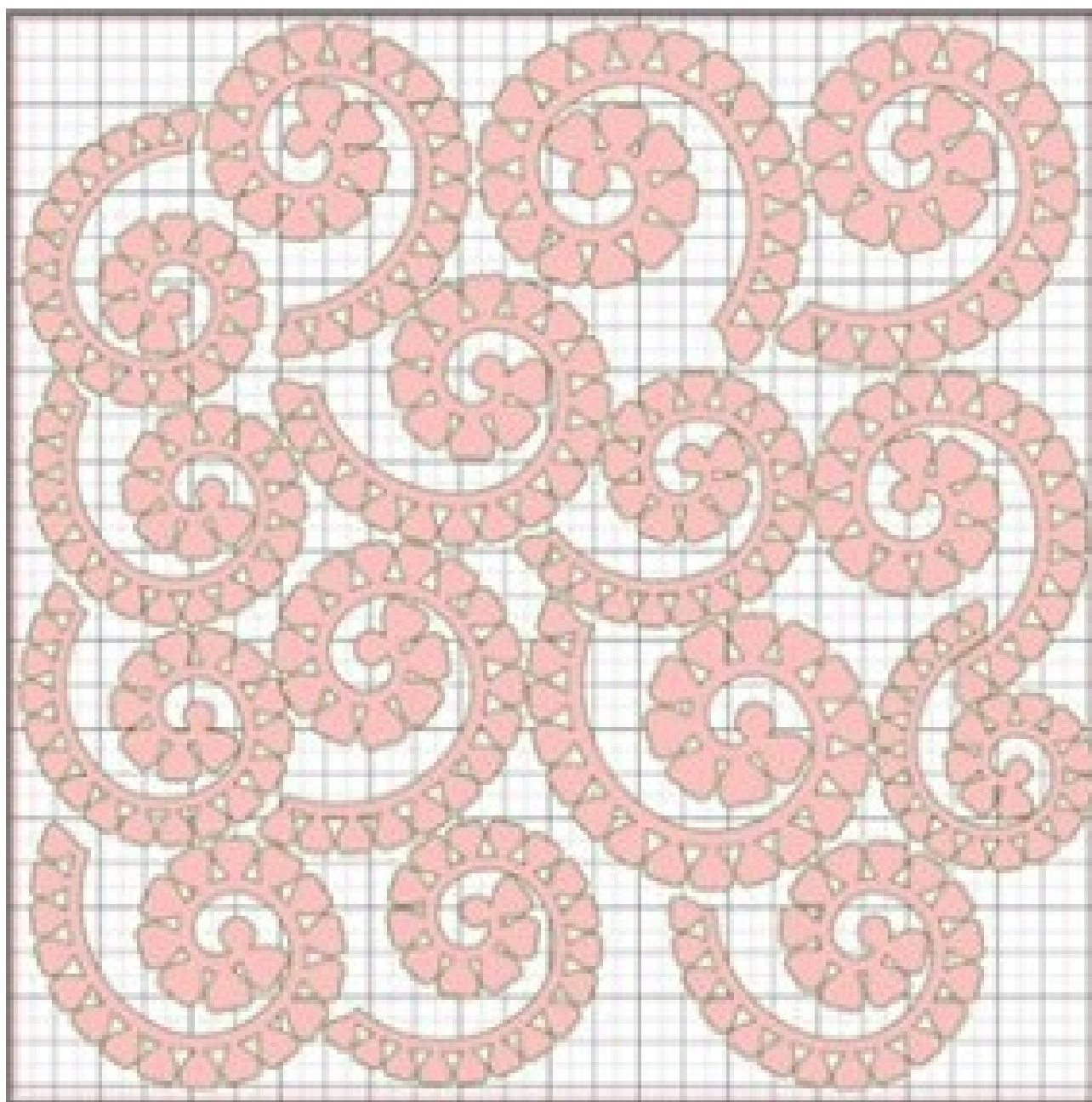


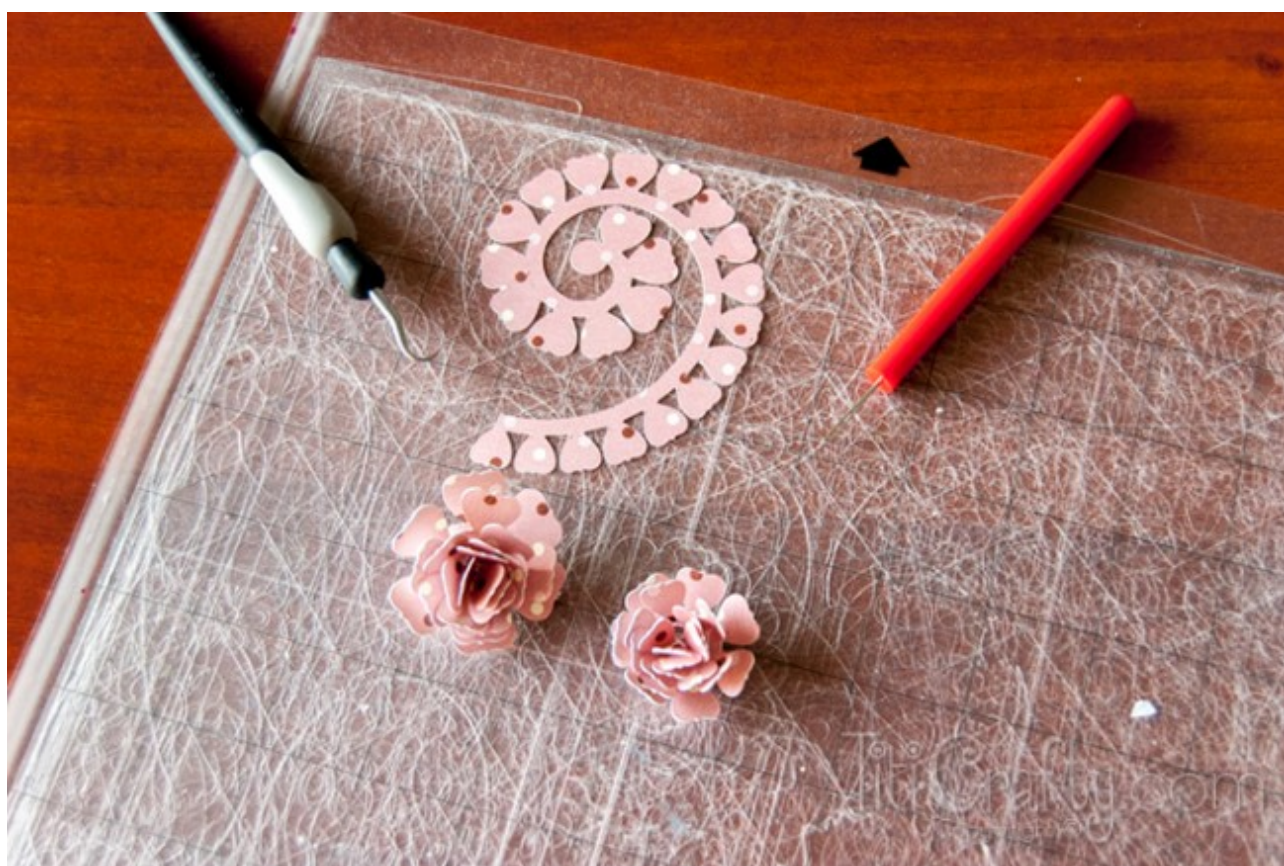
DIY Home Decor

Paper Blossom Branches

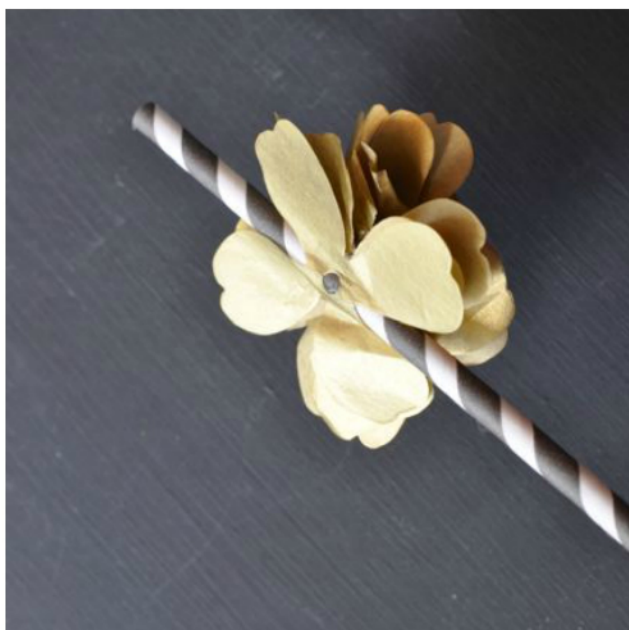
by TitiCrafty.com



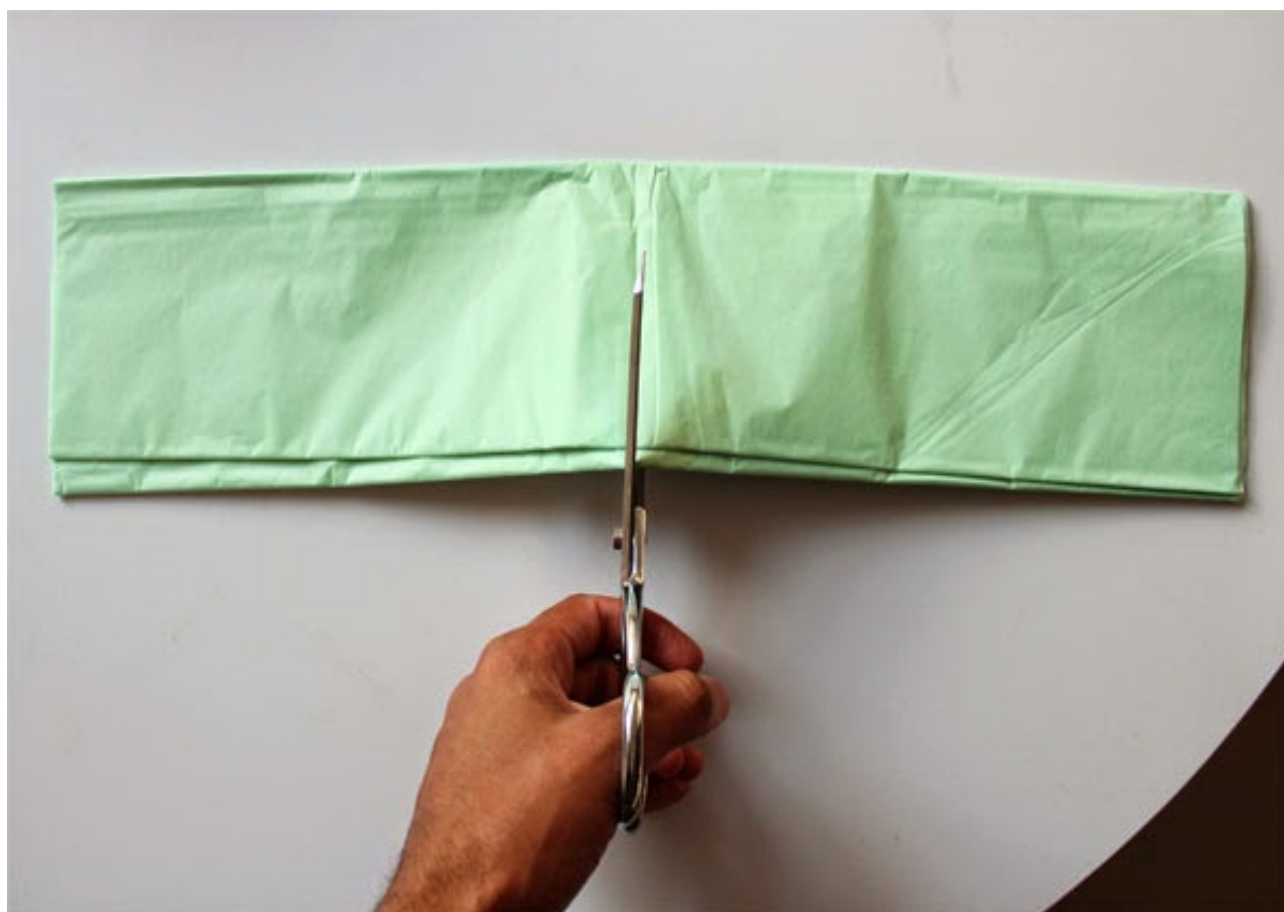






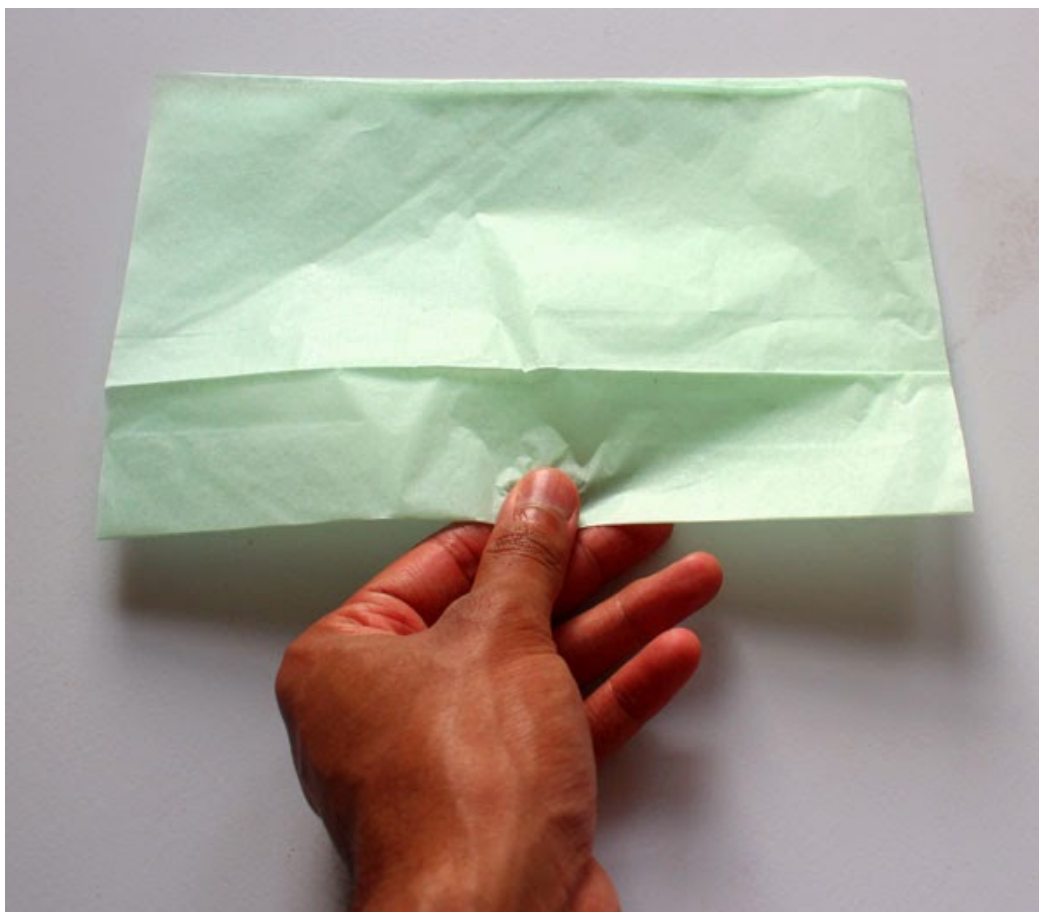


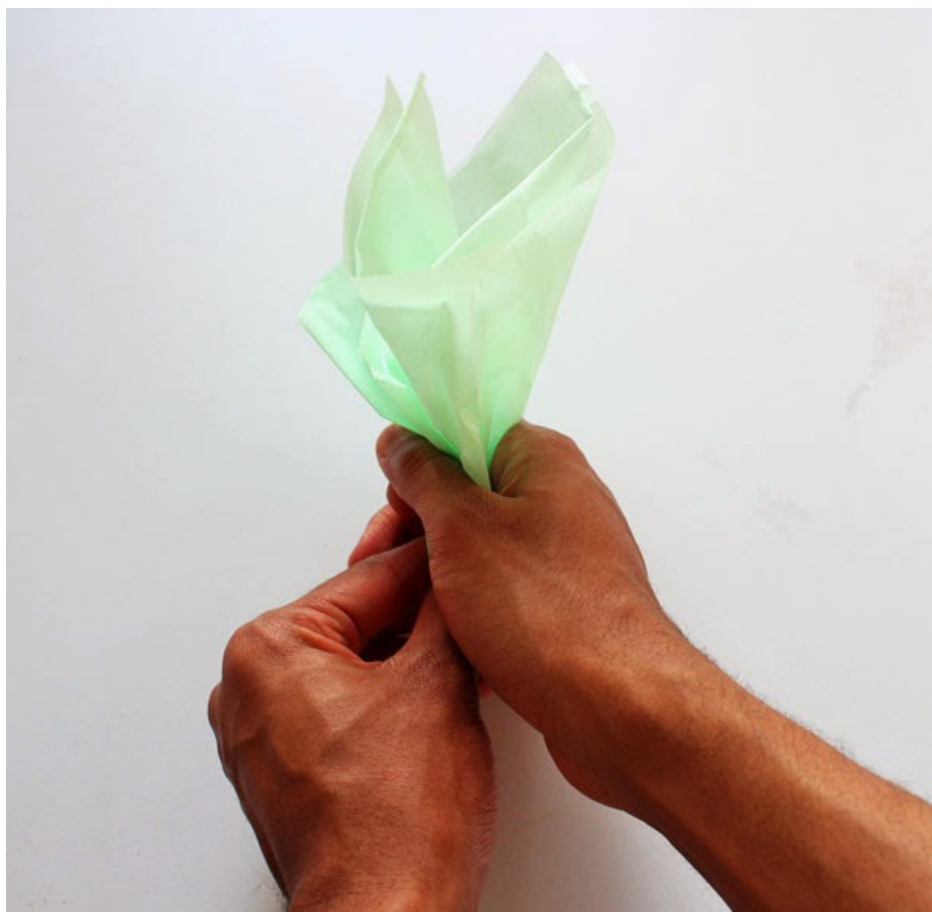






















Crema da

corpo



Ingredients

1/2 cup each of organic

- cocoa butter
- shea butter
- coconut oil
- olive oil

1/2 teaspoon of essential oils (I used 1/4 each of grapefruit and lavender)

Instructions

1. Add cocoa butter, shea butter, coconut oil and olive oil into a double boiler. If you do not have one, use a glass or metal bowl over a pan of boiling water.

2. Heat until melted, mixing with whisk. Remove whisk and put mixture into fridge for one hour or until firm.

3. With hand mixer, whip oils until creamy and light. Add essential oils and mix again.

4. Spoon your body butter into glass jars. Mixture may seem a bit moist after whipping but will firm up after a few minutes.

Notes

Makes about 2 1/2 cups of whipped body butter.

frullato alla fragola

SMOOTHIE DE FRAMBUESA

(1 vaso grande)

1 yogur griego azucarado
1 yogur normal azucarado
65 gr. de mermelada de frambuesas
Sirope de caramelo



Antes de empezar:

- Yo, normalmente, utilizo un yogur tipo griego y otro normal, ya que así la consistencia no es tan líquida como en caso de poner dos yogures normales ni tan densa como poniendo dos griegos, pero siempre podéis adaptarlo a vuestros gustos.
- El sirope de caramelo es opcional. Yo le añado un poquito para endulzar de forma ligera, ya que la mermelada de frambuesas tiene un punto ácido.
- Este tipo de bebidas a mí me encantan refrigeradas ya que sobre todo me apetecen cuando llega el buen tiempo, pero como los yogures ya estarán fríos podéis servirla recién hecha.

Paso a paso:

1. Ponemos los dos yogures y la mermelada en el vaso de la batidora y, con las varillas, batimos bien hasta que la mezcla sea homogénea.
2. Añadimos el caramelo (al gusto) y batimos de nuevo hasta integrarlo por completo.
3. Tapamos el vaso con plástico film y lo refrigeramos mínimo 30 minutos. Yo aconsejo beberlo muuuuy frío, que sobre todo en días de calor se agradece muchísimo!

Wirin Chaowana



Bloom
by Wirin Chaowana



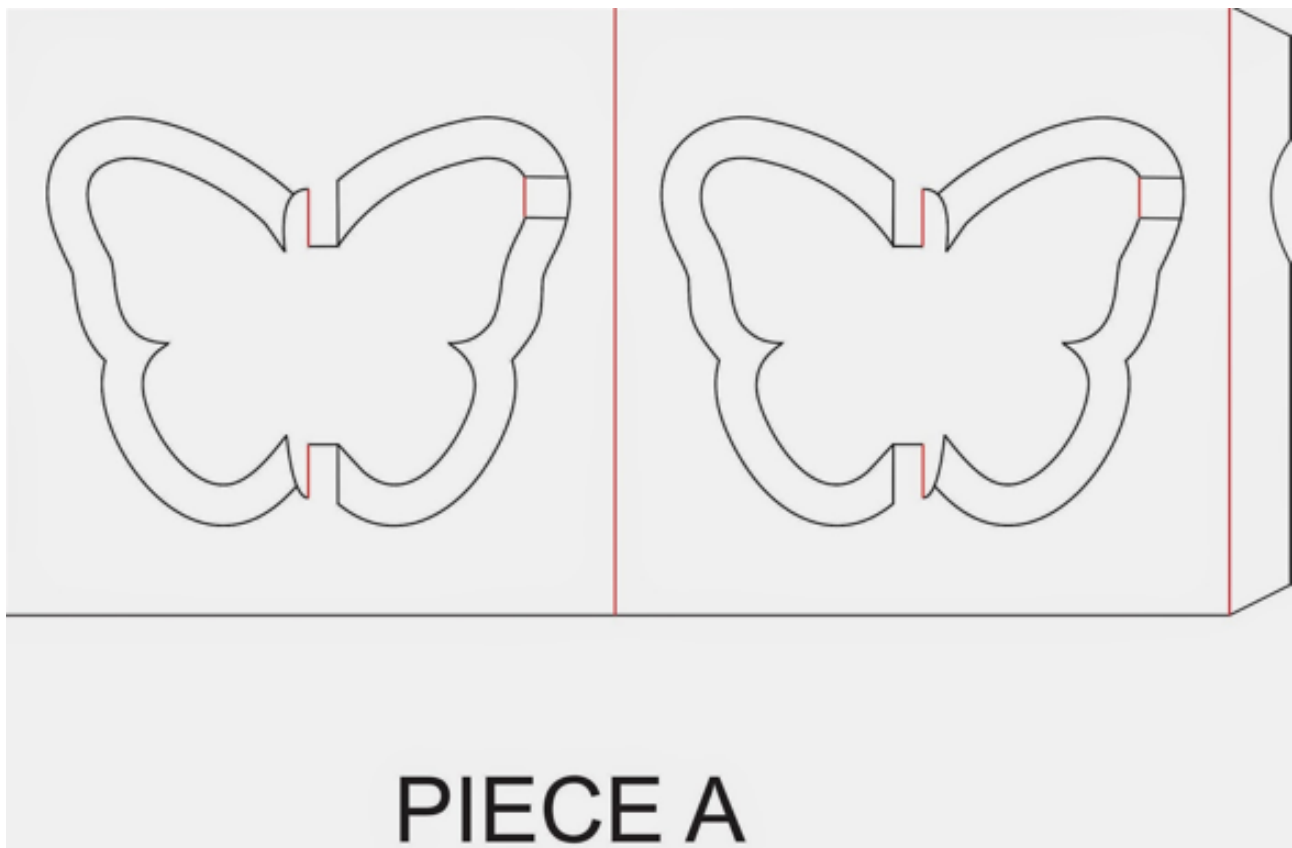
Bloom
by Wirin Chaowana



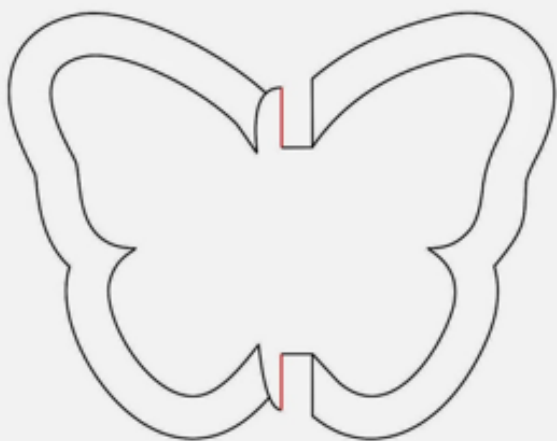
Bloom
by Wirin Chaowana





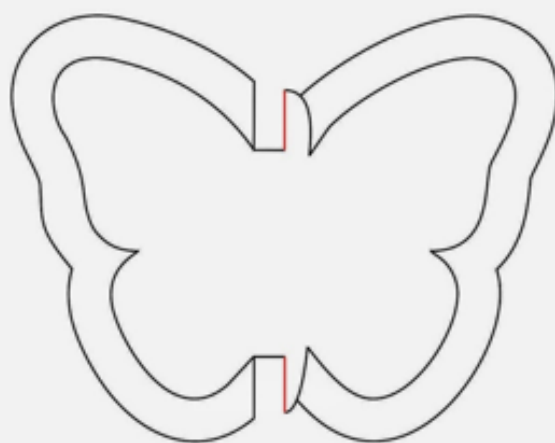
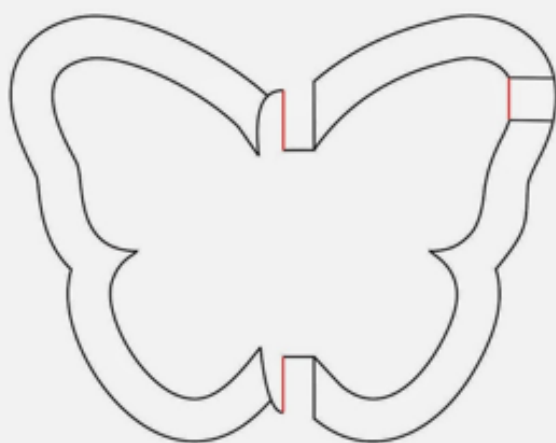


Extreme Cards and Paper
<http://extremecards.blogspot>



PIECE B

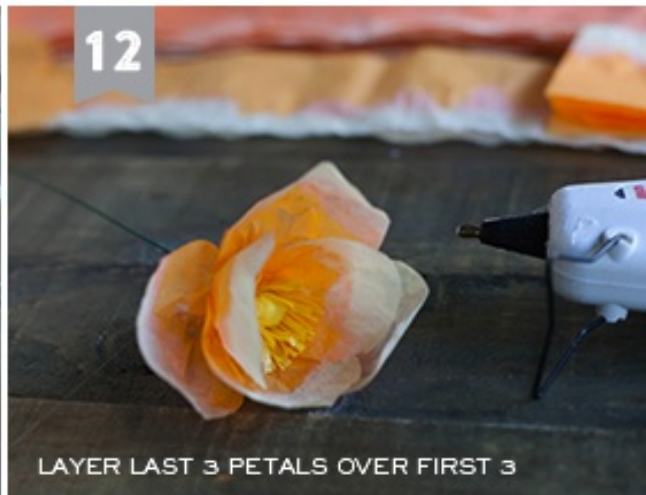
PIECE C



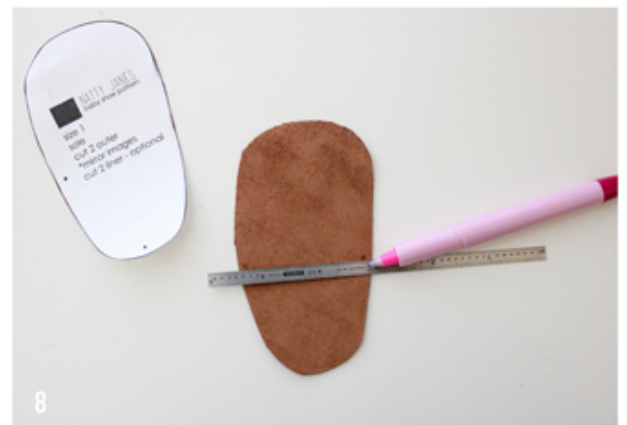


















Modern Baby Boy
Boot Pattern

UPPER

size 1
cut 2 outer
*mirror images

cut 2 lining
from fleece/felt
*mirror images
*or cut scraps
just larger than
this and trim down
after attaching
lining to outer

FREE PATTERN

WWW.DELIA-CREATES.COM



Modern Baby Boy
Boot Pattern

SOLE

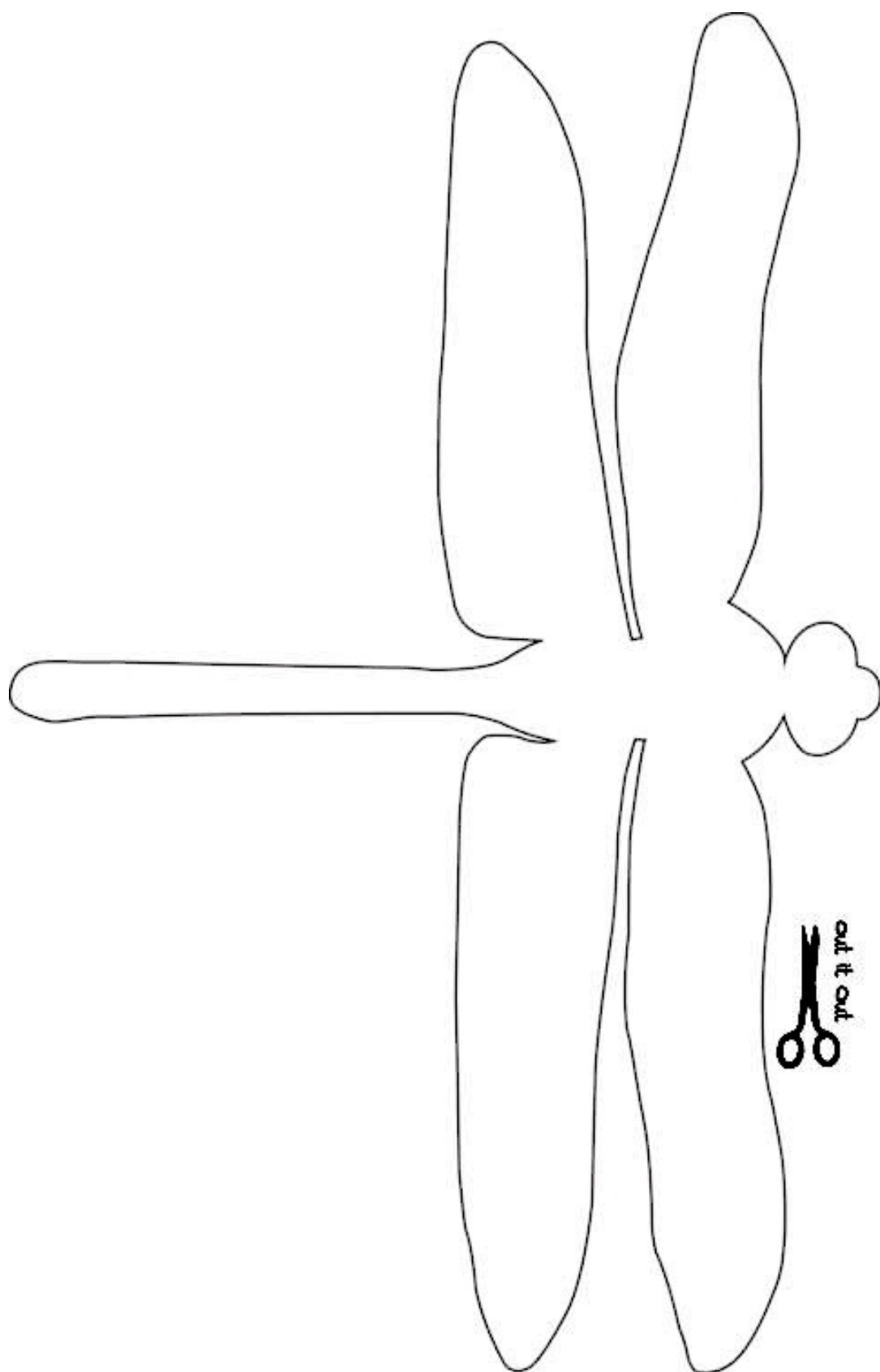
size 1
cut 2 outer
*mirror images













Saddle Bag

FINISHED SIZE:
9 1/2" x 6 1/2" plus handles

FREE PROJECT
by PAT BRAVO



Featuring
DREAMING IN FRENCH



Fabric A
OE-906
exterior
Chocolate
Cherry



Fabric B
DIF-805
lining
White Champs
Bysees

MATERIALS

3/8 yd of OE-906

3/8 yd of DIF-805

20" x 12" rectangle of interfacing
LOW LOFT FLEECE BATTING

2" x 49" strip of interfacing
ULTRA LIGHT FUSIBLE INTERFACING

1 snap closure

1 tassel or brooch

PIECES NEEDED

Transfer marks to all your pieces
with a water soluble pen.

Using the front template:

Cut 1 (one) fabric A (Exterior fabric)

Cut 1 (one) fabric B (Lining fabric)

Cut 1 (one) interfacing (FLEECE BATTING)

Using the back template:

Cut 1 (one) fabric A (Exterior fabric)

Cut 1 (one) fabric B (Lining fabric)

Cut 1 (one) interfacing (FLEECE BATTING)

Rotary cut:

Cut 1 (one) 2" x 49" strip of fabric B

Cut 1 (one) 2" x 49" strip of ULTRA LIGHT interfacing

INSTRUCTIONS

Step 1. Construct front

- Cut patterns on fold, in fabric, lining and interfacing.
- Rotary cut a 2" x 49" strip of fabric B and interfacing for the handle.
- Layer all 3 FRONT pieces together, following the order shown on DIAGRAM 1

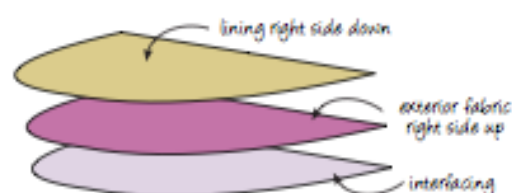


DIAGRAM 1

- Now join the 3 pieces together by stitching through all layers. Stitch only on the top 1/2" from the edge, letting the round part (bottom) open. (DIAGRAM 2)



DIAGRAM 2

- Cut only the interfacing seam allowance, making it 1/8".
- Turn the lining over to the back, revealing the right sides of the lining and exterior fabric. (DIAGRAM 3)
Now the interfacing is going to be in the middle, sandwiched by fabrics. Also, the stitching will not be showing. (DIAGRAM 4)

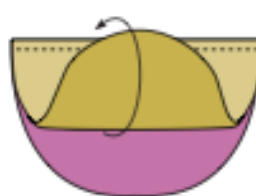


DIAGRAM 3



DIAGRAM 4

- Press the top carefully, making it flat and taking off the bulkiness from the seam.
- Make a topstitch on the top 1/8" from edge with the exterior fabric facing up, so the right side of the stitch is showing. (DIAGRAM 5)
*The bottom part is still open.

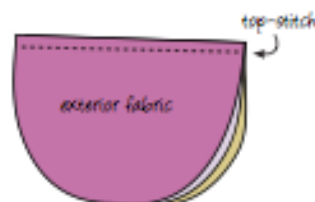


DIAGRAM 5

Step 2. Make Handles

- Put the handle interfacing (fusible side down) on top of the wrong side of the handle fabric. Fuse following manufacturer's directions.
- Fold the strip in half lengthwise, right side of fabric facing together & the interfacing showing outside. Press. (DIAGRAM 6)

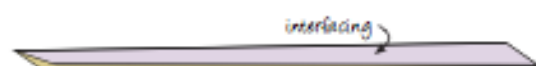


DIAGRAM 6

- Join the long open edge of the folded handle with a 1/4" stitch from the edge. (DIAGRAM 7)



DIAGRAM 7

- Turn the handle inside out using a turning tool. Follow manufacturer's instructions. *To show the right side of the fabric and hide interfacing and seam allowance. (DIAGRAM 8)

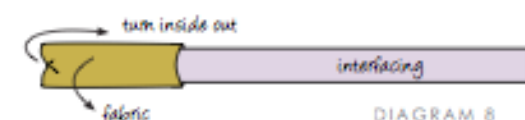


DIAGRAM 8

Step 3. Apply Handles

- Place the handle on top of the front piece, on the lining side. Fold in half each of the ends and align them with the front piece corners.
- Stitch across to hold in place. Backstitch to secure. (DIAGRAM 9)

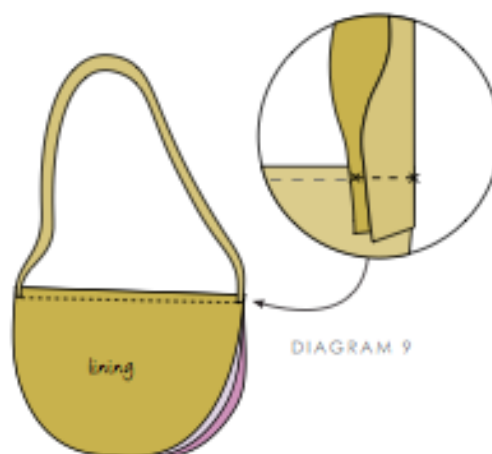


DIAGRAM 9

Step 4. Construct Bag

- On your working surface, place the back lining piece right side up. Place the piece constructed on previous step on top, lining side down. *The handle should be sandwiched between these two pieces and should stay at least 1/2" within the back lining piece area (it shouldn't pass the seam allowance). Pin it so it doesn't move. (DIAGRAM 10)

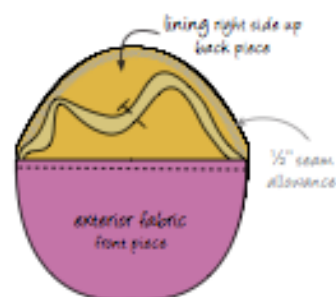


DIAGRAM 10

- Now place the exterior fabric back piece on top, right side down. *The front/handles piece will be in the middle.
- Place the interfacing back piece on top. (DIAGRAM 11)

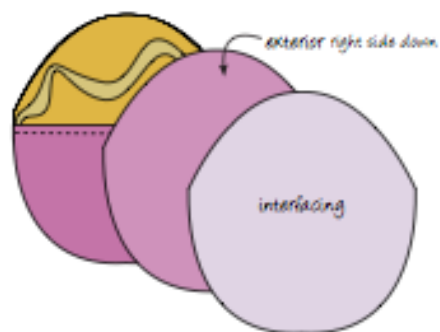


DIAGRAM 11

- Align all layers and pin all pieces so they don't move. (DIAGRAM 12)



DIAGRAM 12

- Join them all together by stitching $\frac{1}{8}$ " from the edge. Leave a 2" opening on the top.
- Cut the interfacing seam allowance to $\frac{1}{8}$ ". (DIAGRAM 13)

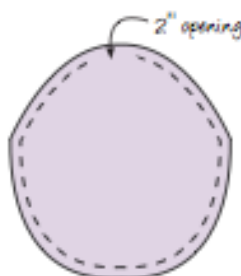


DIAGRAM 13

- Turn it inside out through the opening. Make sure you do it through the lining & exterior fabrics, leaving the interfacing on one side.
- Use a blunt object to push out the edges until you get nice and round borders.
- Fold the seam allowance (2" opening) inside the opening until you get a round shape. Pin it in place.
- Top-stitch $\frac{1}{8}$ " from the finished edge all around the border of the flap. (DIAGRAM 14)

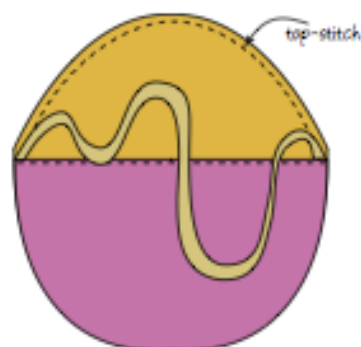
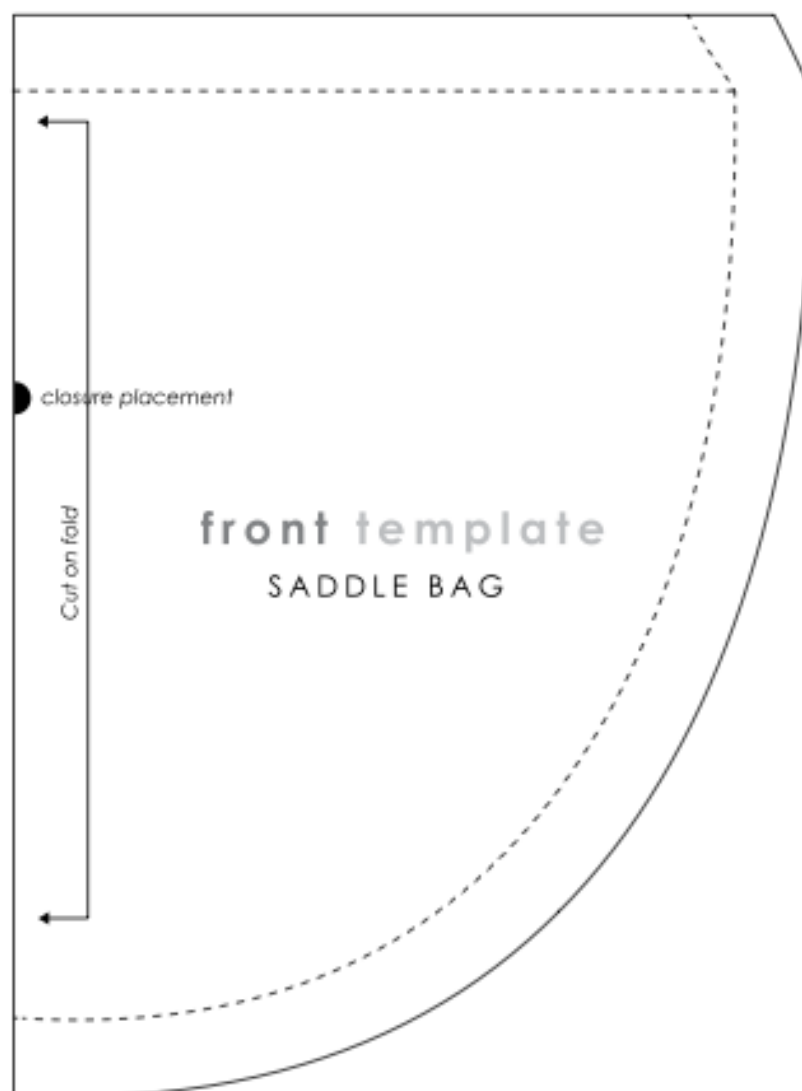


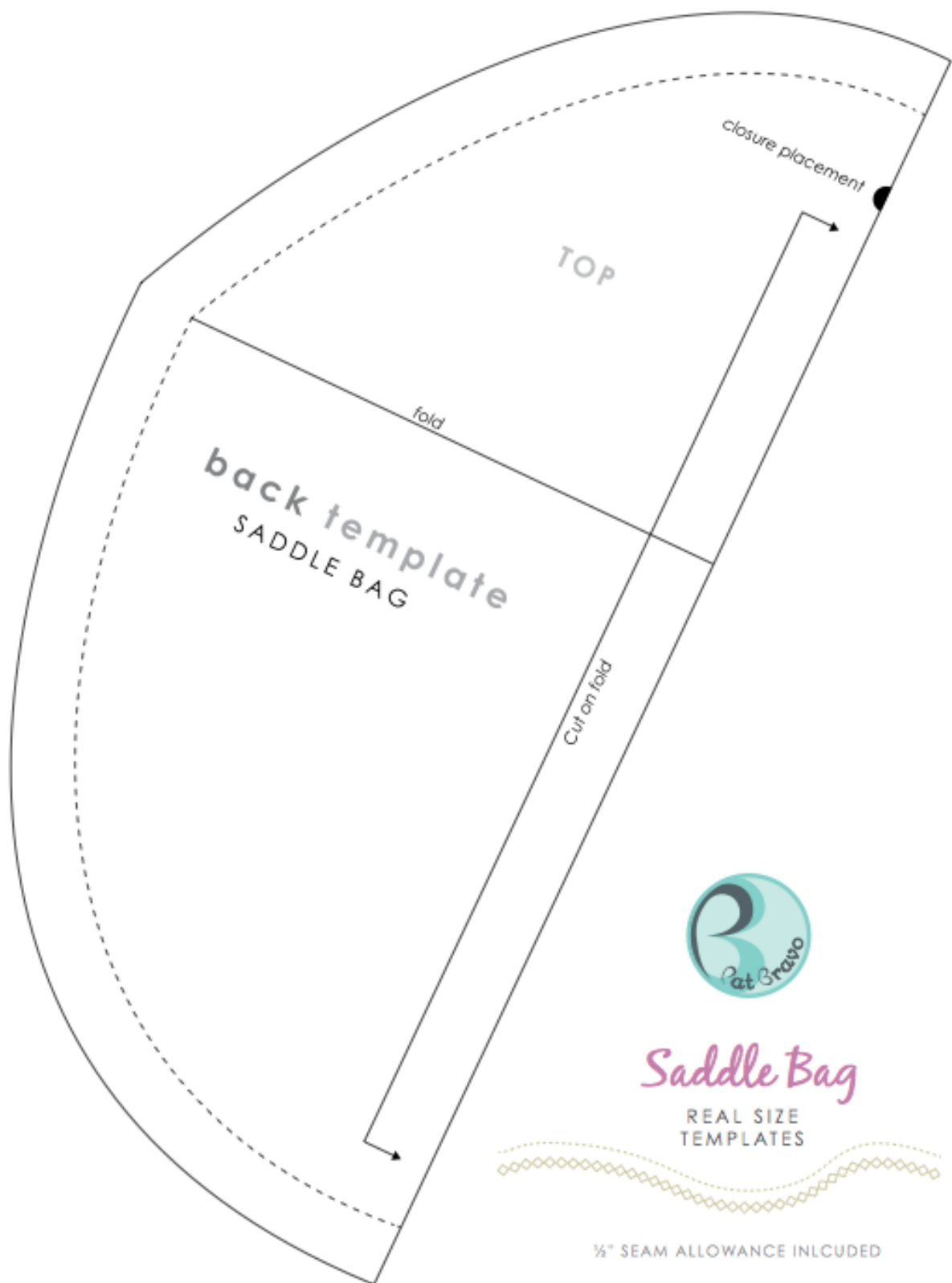
DIAGRAM 14

Step 4. Closure & Embellishments

- Hand sew the snap closures on the corresponding placement marks.
- Put any embellishments you want. We chose a tassel, but it can be a brooch or a vintage decorative button.

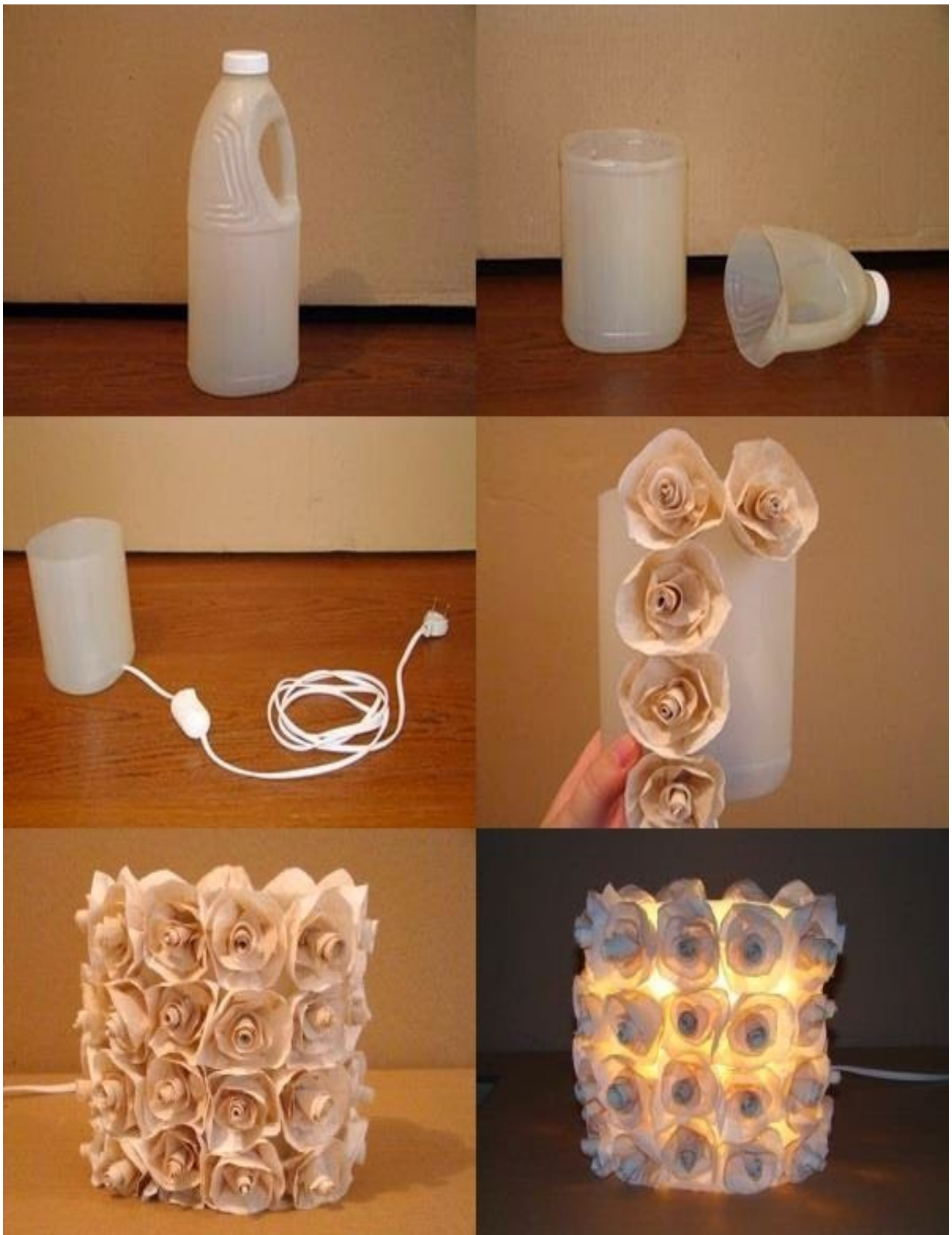
enjoy!

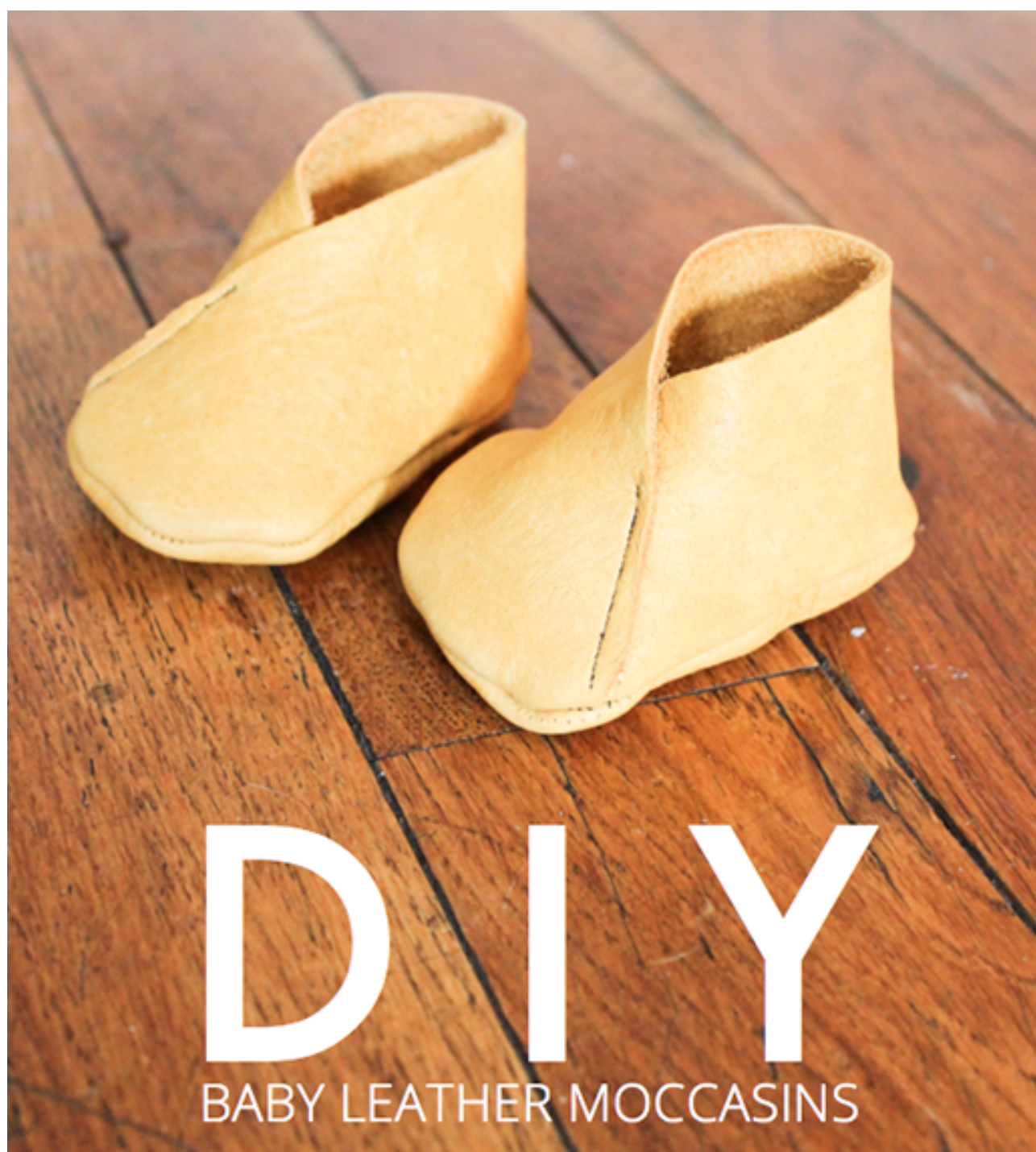






in creations.blogspot.com





DIY

BABY LEATHER MOCCASINS

